

SCHALLBERGER FACETTE STAR EF

Over a thousand in use ...

Universal deburring and chamfering machines
with heat treated steel table 10 x 10 inches (250 x 250 mm)

Applications

- Efficient deburring and chamfering of single pieces or batch produced parts in machining or assembly plants.
- In use next to the production machine reduces idle time and thereby overall costs.
- Milling of chamfers, corner radii or front surfaces on workpieces made of steel, stainless steel, aluminium, non-ferrous metals, plastics, hardwood, etc.



Machine with standard accessories

- for 110 V, 60 Hz,
part no. 921.400.110
- for 230V, 50 Hz,
p/n 921.400.000

Features

- Easy operation
- Powerful double insulated motor for high output.
- Spindle speed infinitely variable for optimum cutting speed, chip removal and excellent surface finish of chamfers or radii in any material.
- Chamfer height infinitely adjustable by means of a micrometer screw with .05 mm (.002") reading.

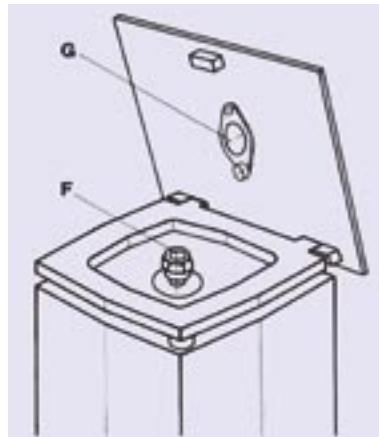
Standard accessories:

- T-socket wrench with depth stop
- Open end wrench 13 mm
- Collet with nut, Ø 6 mm
- Collet with nut, Ø 8 mm
- Guide-rule p/n 921.900.560
- Milling cutter Ø 10 mm x 45°
p.n 921.1090.00
- Milling cutter for contours
Ø 6 mm x 45°
with ball bearing
p/n 921.0690.40

SCHALLBERGER FACETTE STAR EF

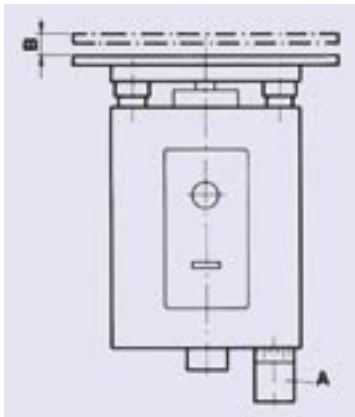
Over a thousand in use ...
Universal deburring and chamfering machines
with heat treated steel table 10 x 10 inches (250 x 250 mm)

Tool Holders



F: Collet for cutters
G: Clamping holder for guide fingers

Front view



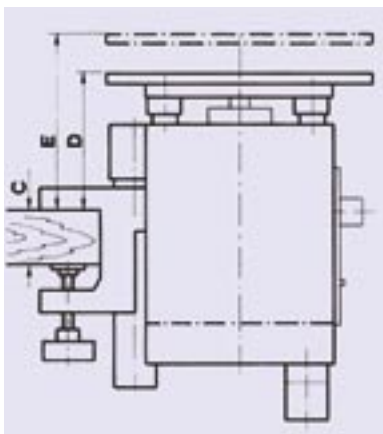
A: Micrometer screw for "B"

B: Adjustment of table height
18 mm, parallel

Technical data

	USA	Europe
• Table surface	10 x 10"	250 x 250 mm
• Power supply	110V, 60 Hz	230V, 50 Hz
• Motor power rating: input	500 Watt	
output	270 Watt	
• Cutter speed	continuously variable 13000 to 28000 RPM	
• Chamfer height "h" (angle 45°)		
infinitely adjustable, for steel	0 to 0.80"	0 to 2 mm
for non ferrous	0 to .120"	0 to 3 mm
• Angle "B" on work piece	15°/30°/45°/60°	
• Radius "R" on work piece	.25 to 3.0 mm	
• net weight	36½ lbs	16.5 Kg

View from left side



C: Work bench slab 1³/₈" to 2³/₈"
(35 mm to 60 mm) thick

Working height over the bench

D: Minimum 5¹/₄" (135 mm)

E: Maximum 11¹/₂"

Contact us on:

Tel: (07793) 025 070 or (01256) 893 863

Fax: (01256) 893 863

website: www.allsolutionproducts.com

email: sales@allsolutionproducts.com

All Solution Products Ltd 4 Skylark Rise Whitechurch Hampshire RG28 7SY

ASP All
Solution
Products

Registered in Cardiff No.4882493